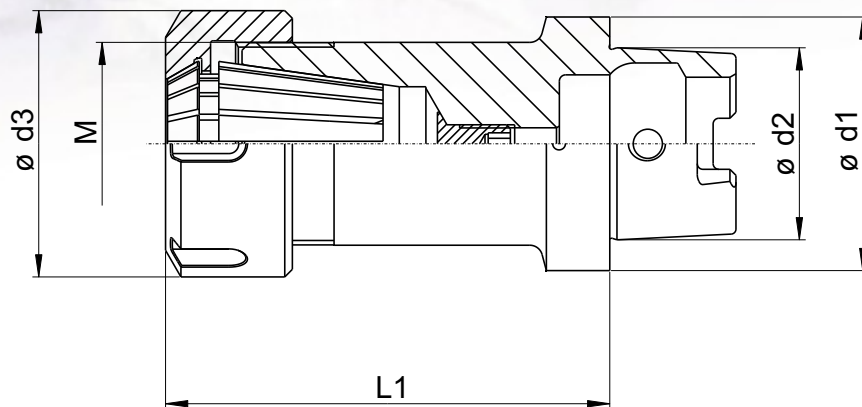


Spannzangenhalter HSK-C

Portes-pinces HSK-C

Collet holders HSK-C

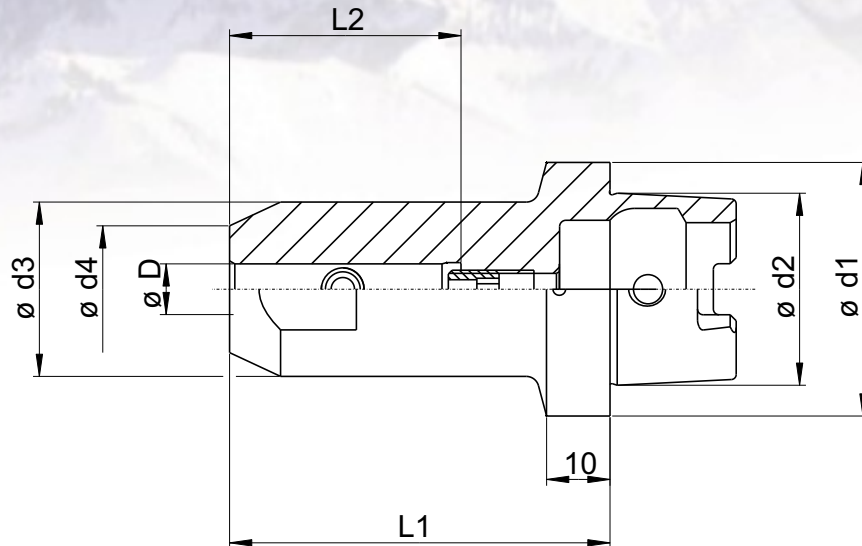


		PCM Nr.	d1	d2	d3	L1	M
HSK-C 32	ER11	HC032E11030	32	24	19	31,6	M14 x 0,75
	ER16	HC032E16055	32	24	28	55	M22 x 1,5
	ER20	HC032E20060	32	24	34	60	M25 x 1,5
	ER25	HC032E25070	32	24	42	70	M32 x 1,5
	ER32	HC032E32075	32	24	50	75	M40 x 1,5
HSK-C 40	ER20	HC040E20060	40	30	34	60	M25 x 1,5
	ER25	HC040E25070	40	30	42	70	M32 x 1,5
	ER32	HC040E32075	40	30	50	75	M40 x 1,5
	ER40	HC040E40075	40	30	63	75	M50 x 1,5

Werkzeughalter HSK-C Whistle-Notch

Portes-outil HSK-C Whistle-Notch

Tool holders HSK-C Whistle-Notch



	PCM Nr.	d1	d2	d3	d4	L1	L2	D
HSK-C 32	HC032N06060	32	24	25	15	60	36	6
	HC032N08060	32	24	28	20	60	36	8
	HC032N10065	32	24	35	25	65	40	10
	HC032N12075	32	24	42	30	75	45	12
	HC032N16080	32	24	48	36	80	48	16
	HC032N20080	32	24	52	40	80	50	20
HSK-C 40	HC040N06060	40	30	25	15	60	36	6
	HC040N08060	40	30	28	20	60	36	8
	HC040N10065	40	30	35	25	65	40	10
	HC040N12070	40	30	42	30	70	45	12
	HC040N14070	40	30	44	32	70	45	14
	HC040N16075	40	30	48	36	75	48	16
	HC040N20080	40	30	52	40	80	50	20
	HC040N25095	40	30	65	45	95	56	25